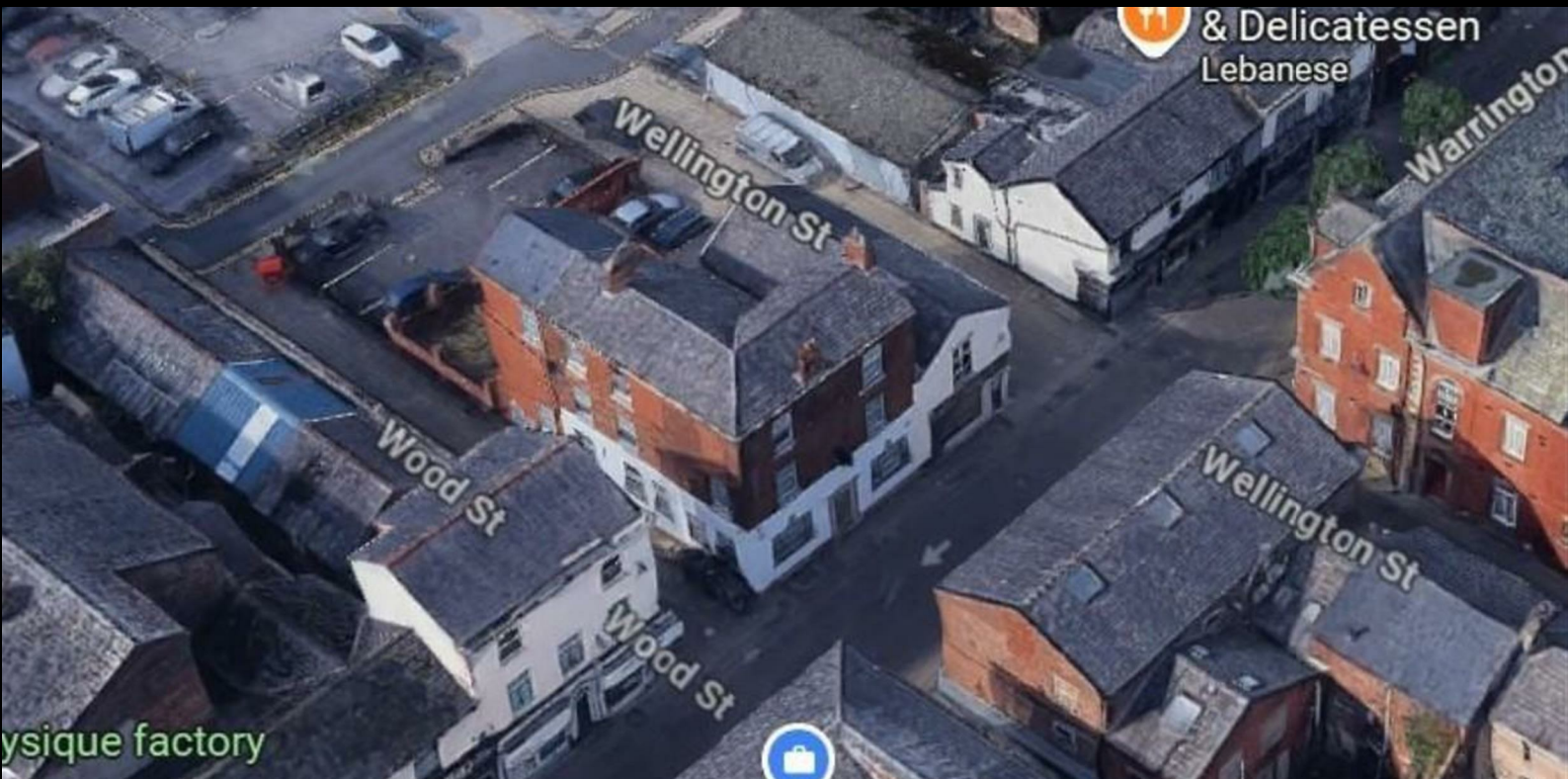


Thompson Estates

LETTINGS AND SALES

Thompson Estates
163 Stamford Street Central
Ashton-Under-Lyne
OL6 6XW

0161 399 1630
info@thompson.co.uk



Wood Street, Ashton-under-Lyne

We are excited to bring to market this self contained apartment on Wood Street in the centre of Ashton-Under-Lyne, part of 7 these contemporary one-bedroom apartments offer a perfect blend of modern living and convenience. Recently converted, the property boasts a fresh and stylish design, ideal for those seeking a comfortable and secure home.

Upon arrival, you will find a secure entrance with a video intercom system, ensuring peace of mind for residents. The apartments feature well-proportioned rooms that provide a welcoming space and are thoughtfully designed to maximise comfort and privacy, these apartments present a fantastic opportunity to enjoy contemporary living in a well-connected area

Each apartment is thoughtfully functional, making an excellent choice for working professionals. The location offers great transport links, allowing for easy access to nearby amenities and the wider region including Manchester City Centre.

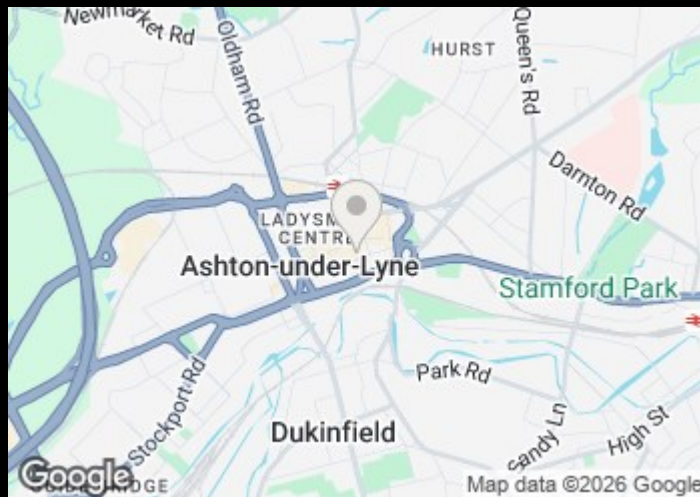
Don't miss the chance to make this delightful space your new home. Call or email to arrange a viewing appointment.

- Apartment
- Bedrooms- 1
- Bathrooms- 1
- Receptions- 1
- EPC-

£895



Energy Efficiency Rating			Environmental Impact (CO ₂) Rating		
	Current	Potential		Current	Potential
Very energy efficient - lower running costs			Very environmentally friendly - lower CO ₂ emissions		
(92 plus) A			(92 plus) A		
(81-91) B			(81-91) B		
(69-80) C			(69-80) C		
(55-68) D			(55-68) D		
(39-54) E			(39-54) E		
(21-38) F			(21-38) F		
(1-20) G			(1-20) G		
Not energy efficient - higher running costs			Not environmentally friendly - higher CO ₂ emissions		
England & Wales	EU Directive 2002/91/EC		England & Wales	EU Directive 2002/91/EC	



Thompson Estates
 163 Stamford Street Central
 Ashton-Under-Lyne
 OL6 6XW
 0161 399 1630
 info@thompson.co.uk

These particulars, whilst believed to be accurate are set out as a general outline only for guidance and do not constitute any part of an offer or contract. Intending purchasers should not rely on them as statements of representation of fact, but must satisfy themselves by inspection or otherwise as to their accuracy. No person in this firms employment has the authority to make or give any representation or warranty in respect of the property.